



COLLECTIVE COMMUNITIES: ACTIONS ON ENVIRONMENTAL CRISES

A Guide For Closer Looking

Weinberg/Newton Gallery

ABOUT THE EXHIBITION

Collective Communities: Actions on Environmental Crises is a presentation of artist collaboratives, collectives, and cooperatives that are concerned primarily with ecologies in crisis; and while the participating groups possess overlapping interests, their projects and ways of self-organization and self-presentation are distinct. Whether natural, social, or representational, the ecologies that our contributors advocate for have been directly affected by climate and land abuses as well as other negligent policies and histories.

Collective Communities features work by Deep Time Chicago, Justseeds Artists' Cooperative, and Karrabing Film Collective and is organized in collaboration with Earthjustice.

ABOUT OUR PARTNER

Earthjustice is the premier nonprofit environmental law organization. They wield the power of law and the strength of partnership to protect people's health, to preserve magnificent places and wildlife, to advance clean energy, and to combat climate change. They are here because the earth needs a good lawyer.

NOTE FROM THE CURATOR

There is no time like the present; and though it can sometimes seem as if there is no time in the present, one technique to defy this ever-narrowing envelope is to work together. It could be said that group work occurs at varying degrees in most forms of cultural production. Many artists work with their assistants to realize projects that a single-person could not make with their hands alone. *Collective Communities* recognizes those that have made their group work explicit and visible at the outset. One reasoning for their forthright appearance could be that the effect of collaboration, collectivization, and cooperation is a main exploration of their projects. Another could be that the scale of their subject necessarily requires multiple people – in multiple places – to more widely survey and more effectively communicate their findings.

– Nabiha Khan-Giordano

 **Artmaking Activities**

 **[Collectivecommunities.weinbergnewtongallery.com](http://collectivecommunities.weinbergnewtongallery.com)**

 **Earthjustice**

 **Public Programs**

Glossary

Anthropocene is the current geological age, viewed as the period during which human activity has been the dominant influence on climate and the environment

Archive is a collection of historical documents or records providing information about a place, institution, or group of people

Cartography is the science or art of making maps

Collaborate is to work jointly on an activity, especially to produce or create something

Collective is a group of artists working together to achieve a common objective

Cooperative is an enterprise or organization owned by and operated for the benefit of those using its services

Climate Justice is the fair treatment of people of all races, cultures, incomes and educational levels with respect to the development and enforcement of environmental laws, regulations and policies

Ecology is a branch of science concerned with the interrelationship of organisms and their environments

Geology is the scientific study of the origin, history, and structure of the earth

Indigenous refers to the earliest known inhabitants of a place and especially of a place that was colonized by a now-dominant group

Inequality is a situation in which some people gain privileges simply because they are members of a group defined by race, wealth, sexual orientation or other factors. Those who are not members of those groups are denied the same privileges.

Map is a representation of space or place, or of phenomena as they exist in space

Narrative is a spoken or written account of connected events; a story

Pollution is material in the natural environment that does not belong there, and that damages the environment and living things, including people

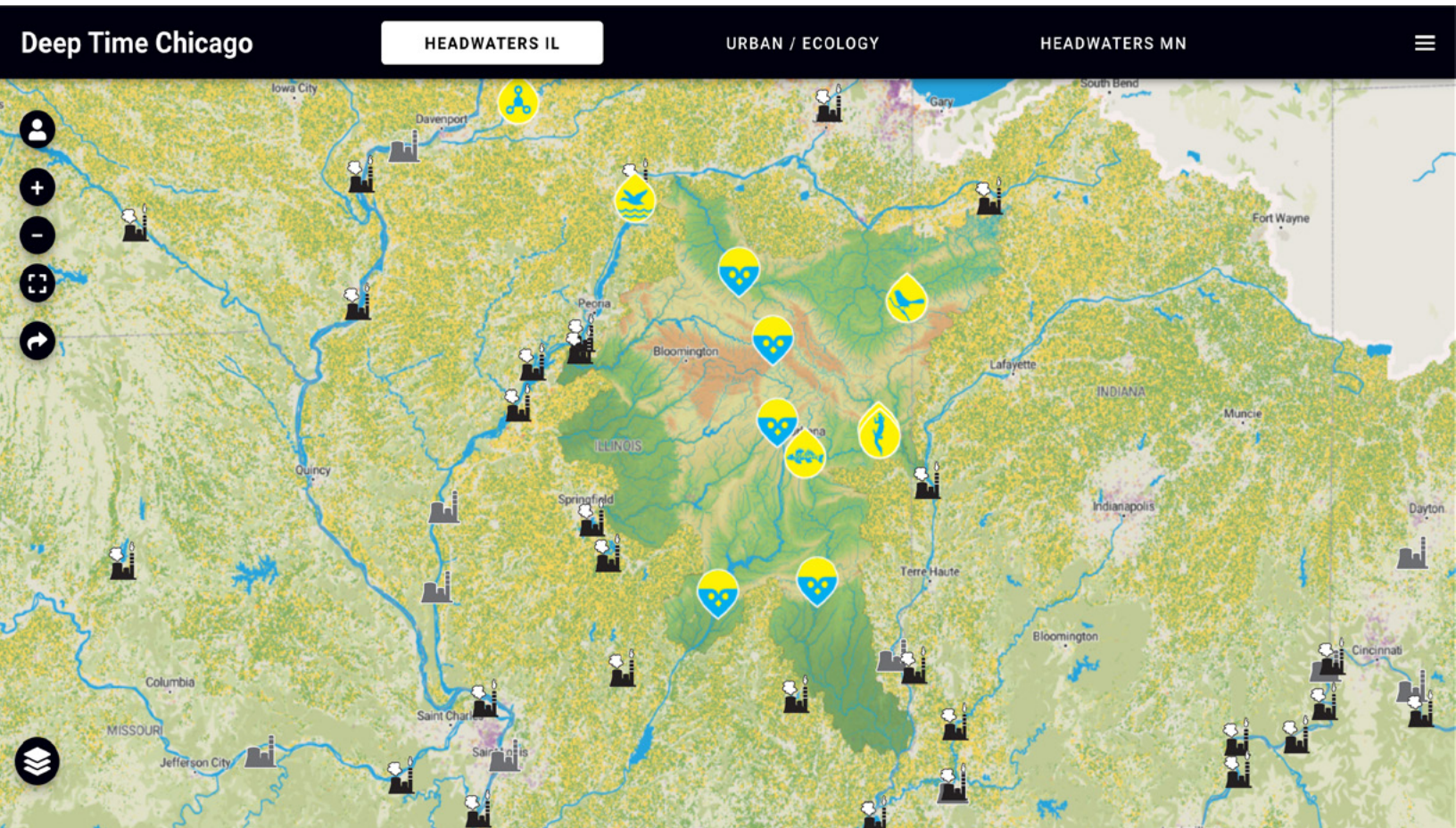
**DEEP TIME
CHICAGO**

**JUSTSEEDS
ARTISTS'**

**KARRABING
FILM COLLECTIVE**

DEEP TIME CHICAGO

Mapmaker, There is No Map



 Explore

Analyze

What do you notice first? Describe what else you see.

What place or places does the map show?

What special features does the map have? What information do these features provide?

What did you learn from examining this map?

Reflect

How can maps help us see where injustice exists?

What would a more environmentally just situation look like on the map?

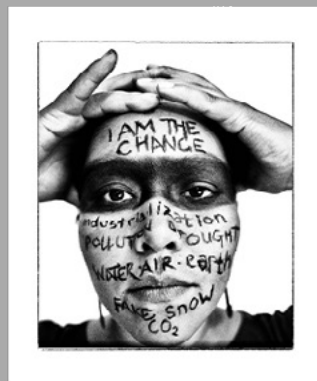
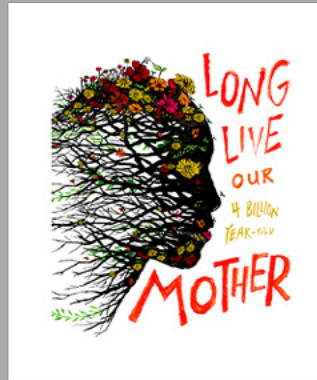
Think about your community.

What source(s) of pollution exist?

Who lives in the areas where these pollutants are concentrated?

What would a more environmentally just situation look like in your community?

JUSTSEEDS ARTISTS' COOPERATIVE



[View](#)

Analyze

Are there any recognizable objects, places or scenes? How are they presented?

Is there text?

How is color used?

What other details do you notice?

What is the mood?

What information do you learn?

What is the message?

What is your emotional response to the work?

Reflect

Which environmental issues or movements are most important to you and your community? Why?

Who does this issue effect?

What do you want people to know about it?

How can you be actively engaged with this issue or movement?

KARRABING FILM COLLECTIVE

A Day in the Life



 Watch

Analyze

How is the film structured?

Does it take place in the present, the past, or the future?

Through whose eyes does the narrative unfold?

What is the soundtrack? What sounds, words, and/or phrases are repeated?

How would you describe the pace/tempo of the film?

What effects are utilized in the film?

What images, sounds, and themes are repeated?

What is the theme of the film, and how is that theme constructed?

Reflect

How does the media perpetuate racial and ethnic stereotypes?

What role does the media play in shaping collective identity?

What does a day in your life look like?

What things keep you emotionally and physically healthy and safe?

What external influences and constraints shape your daily life?

Collective Communities

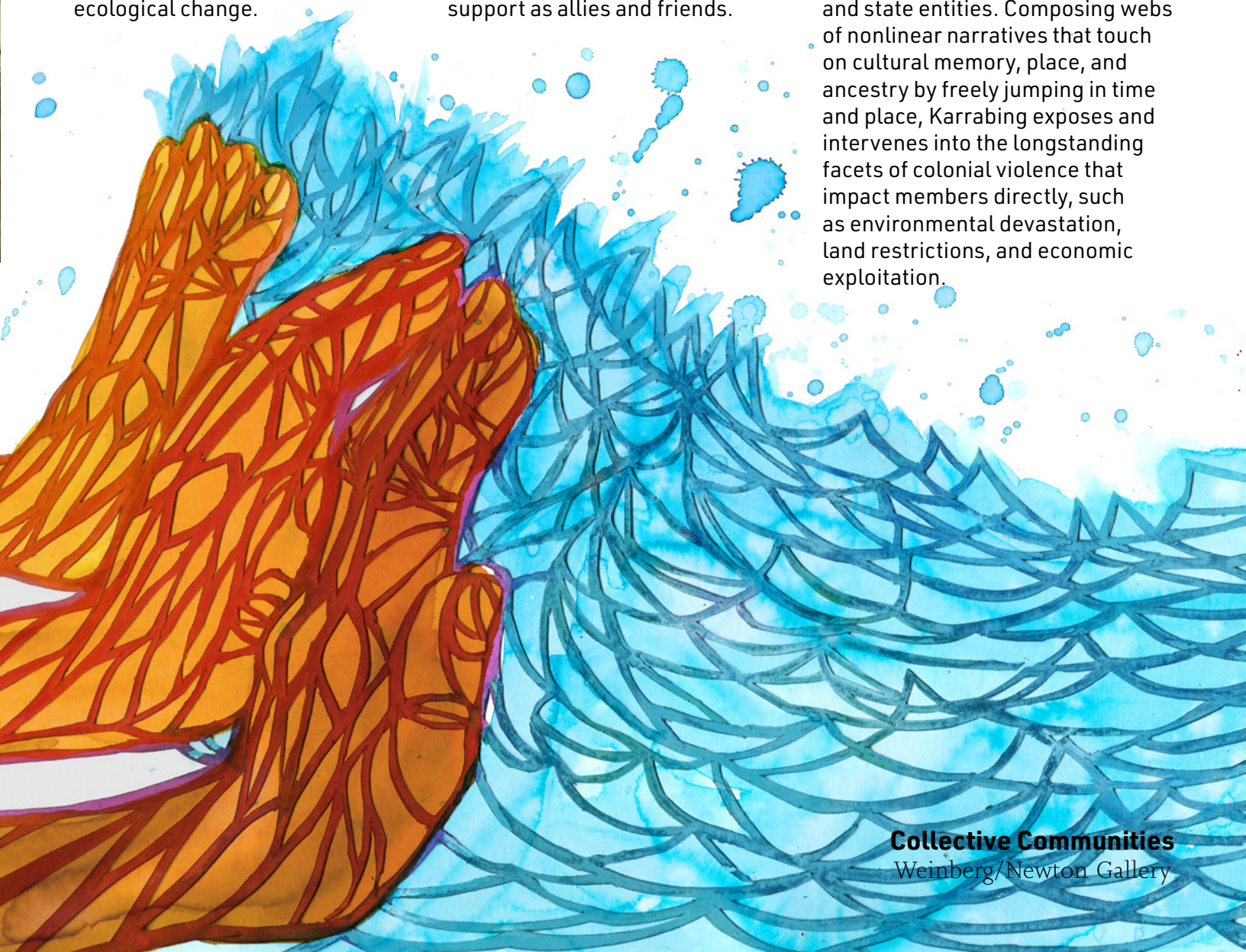
Weinberg/Newton Gallery

ABOUT

Deep Time Chicago is an art/ research/activism initiative formed in the wake of the Anthropocene Curriculum program at HKW in Berlin, Germany. The initiative's goal is to explore one core idea: humanity as a geological agency, capable of disrupting the earth system and inscribing present modes of existence into deep time. By knitting together group readings, guided walks, lectures, panels, screenings, performances, publications and exhibitions, we hope to develop a public research trajectory, offering a variety of formats where Chicago area inhabitants can grapple with the crucial questions of global ecological change.

Justseeds Artists' Cooperative, with members working from the U.S., Canada, and Mexico, operates both as a unified collaboration of similarly minded printmakers and as a loose collection of creative individuals with unique viewpoints and working methods. We believe in the transformative power of personal expression in concert with collective action. To this end, we produce collective portfolios, contribute graphics to grassroots struggles for justice, work collaboratively both in- and outside the co-op, build large sculptural installations in galleries, and wheatpaste on the streets—all while offering each other daily support as allies and friends.

Karrabing Film Collective is an Indigenous family-based group of some 30 people who together create films using an "improvisational realism" that opens a space beyond binaries of the fictional and the documentary, the past and the present. Meaning "low tide" in the Emmiyengal language, karrabing refers to a form of collectivity outside of government-imposed strictures of clanship or land ownership. Shot on handheld cameras and phones, most of Karrabing's films dramatize and satirize the daily scenarios and obstacles that collective members face in their various interactions with corporate and state entities. Composing webs of nonlinear narratives that touch on cultural memory, place, and ancestry by freely jumping in time and place, Karrabing exposes and intervenes into the longstanding facets of colonial violence that impact members directly, such as environmental devastation, land restrictions, and economic exploitation.



Collective Communities
Weinberg/Newton Gallery